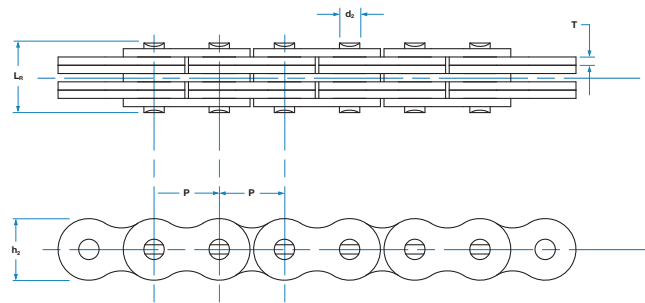
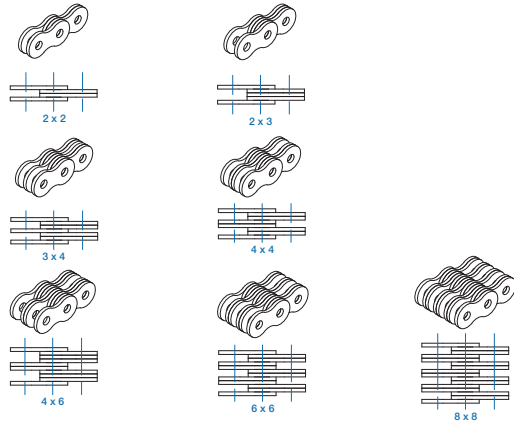




# Special Applications

## Leaf Chain

(All dimensions listed in inches)



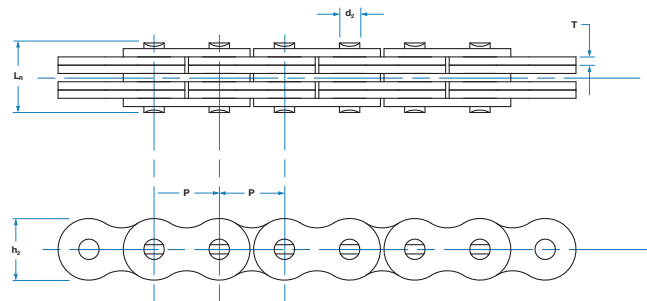
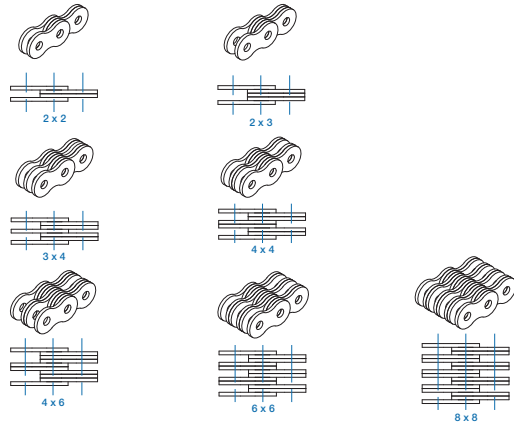
| Chain Number | Pitch | Plate Lacing | Inner Plate Height | Plate Thickness | Pin Diameter | Pin Length | Minimum Ultimate Tensile Strength (lbs) | Average Tensile Strength (lbs) | Max Working Load (lbs) | Weight per Foot (lbs/ft) |
|--------------|-------|--------------|--------------------|-----------------|--------------|------------|---|--------------------------------|------------------------|--------------------------|
|              | P     |              | $h_2$ max          | T max           | $d_2$ max    | $L_1$ max  |   |                                |                        |                          |
| AL322        | 0.375 | 2x2          | 0.30               | 0.051           | 0.141        | 0.27       | 2,045                                   | 2,293                          | 205                    | 0.2                      |
| AL344        | 0.375 | 4x4          | 0.30               | 0.051           | 0.141        | 0.46       | 4,090                                   | 4,496                          | 409                    | 0.3                      |
| AL422        | 0.500 | 2x2          | 0.41               | 0.059           | 0.156        | 0.33       | 3,205                                   | 3,799                          | 321                    | 0.3                      |
| AL444        | 0.500 | 4x4          | 0.41               | 0.059           | 0.156        | 0.57       | 6,409                                   | 7,913                          | 641                    | 0.5                      |
| AL466        | 0.500 | 6x6          | 0.41               | 0.059           | 0.156        | 0.81       | 9,614                                   | 11,847                         | 961                    | 0.8                      |
| AL522        | 0.625 | 2x2          | 0.50               | 0.080           | 0.200        | 0.44       | 5,000                                   | 6,182                          | 500                    | 0.4                      |
| AL534        | 0.625 | 3x4          | 0.50               | 0.080           | 0.200        | 0.67       | 7,500                                   | 10,341                         | 750                    | 0.7                      |
| AL544        | 0.625 | 4x4          | 0.50               | 0.080           | 0.200        | 0.76       | 10,000                                  | 12,364                         | 1,000                  | 0.8                      |
| AL566        | 0.625 | 6x6          | 0.50               | 0.080           | 0.200        | 1.08       | 15,000                                  | 18,546                         | 1,500                  | 1.2                      |
| AL622        | 0.750 | 2x2          | 0.61               | 0.095           | 0.234        | 0.51       | 8,409                                   | 9,981                          | 841                    | 0.6                      |
| AL644        | 0.750 | 4x4          | 0.61               | 0.095           | 0.234        | 0.89       | 14,450                                  | 17,714                         | 1,445                  | 1.2                      |
| AL666        | 0.750 | 6x6          | 0.61               | 0.095           | 0.234        | 1.27       | 22,750                                  | 26,661                         | 2,275                  | 1.7                      |
| AL688        | 0.750 | 8x8          | 0.61               | 0.095           | 0.234        | 1.66       | 30,317                                  | 35,204                         | 3,032                  | 2.3                      |
| AL822        | 1.000 | 2x2          | 0.82               | 0.128           | 0.312        | 0.64       | 12,886                                  | 15,421                         | 1,289                  | 1.0                      |
| AL844        | 1.000 | 4x4          | 0.82               | 0.128           | 0.312        | 1.16       | 25,773                                  | 30,483                         | 2,577                  | 2.0                      |
| AL866        | 1.000 | 6x6          | 0.82               | 0.128           | 0.312        | 1.74       | 38,636                                  | 45,477                         | 3,864                  | 3.0                      |
| AL1022       | 1.250 | 2x2          | 1.01               | 0.157           | 0.375        | 0.77       | 20,114                                  | 24,076                         | 2,011                  | 1.6                      |
| AL1044       | 1.250 | 4x4          | 1.01               | 0.157           | 0.375        | 1.43       | 40,227                                  | 45,769                         | 4,023                  | 3.1                      |
| AL1066       | 1.250 | 6x6          | 1.01               | 0.157           | 0.375        | 2.06       | 60,227                                  | 70,879                         | 6,023                  | 4.8                      |
| AL1088       | 1.250 | 8x8          | 1.01               | 0.157           | 0.375        | 2.70       | 80,454                                  | 94,686                         | 8,045                  | 6.7                      |
| AL1222       | 1.500 | 2x2          | 1.20               | 0.189           | 0.437        | 0.96       | 28,864                                  | 33,967                         | 2,886                  | 2.5                      |
| AL1244       | 1.500 | 4x4          | 1.20               | 0.189           | 0.437        | 1.72       | 57,727                                  | 67,373                         | 5,773                  | 4.7                      |
| AL1266       | 1.500 | 6x6          | 1.20               | 0.189           | 0.437        | 2.49       | 86,591                                  | 95,832                         | 8,659                  | 7.1                      |
| AL1288       | 1.500 | 8x8          | 1.20               | 0.189           | 0.437        | 3.25       | 11,545                                  | 127,776                        | 1,155                  | 9.4                      |
| AL1444       | 1.750 | 4x4          | 1.43               | 0.220           | 0.498        | 2.02       | 84,705                                  | 92,977                         | 8,471                  | 6.9                      |
| AL1466       | 1.750 | 6x6          | 1.43               | 0.220           | 0.498        | 2.94       | 127,045                                 | 139,465                        | 12,705                 | 10.2                     |
| AL1644       | 2.000 | 4x4          | 1.64               | 0.252           | 0.559        | 2.28       | 107,045                                 | 117,525                        | 10,705                 | 8.7                      |
| AL1666       | 2.000 | 6x6          | 1.64               | 0.252           | 0.559        | 3.30       | 160,454                                 | 176,153                        | 16,045                 | 13.3                     |
| AL1688       | 2.000 | 8x8          | 1.64               | 0.252           | 0.559        | 4.31       | 214,090                                 | 235,028                        | 21,409                 | 17.1                     |



# Special Applications

## Leaf Chain

(All dimensions listed in inches)



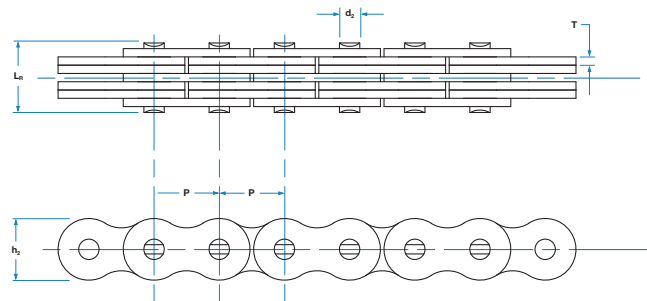
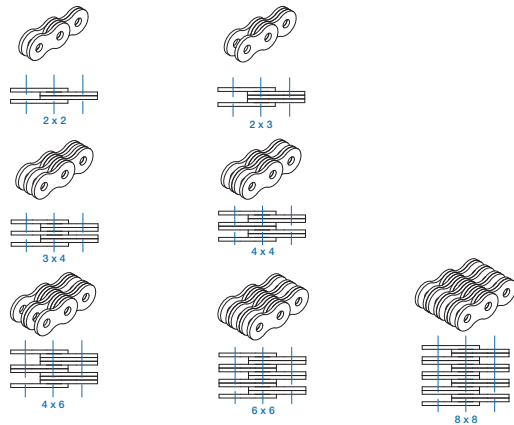
| Chain Number | Pitch | Plate Lacing | Inner Plate Height | Plate Thickness | Pin Diameter | Pin Length | Minimum Ultimate Tensile Strength (lbs) | Average Tensile Strength (lbs) | Max Working Load (lbs) | Weight per Foot (lbs/ft) |
|--------------|-------|--------------|--------------------|-----------------|--------------|------------|---|--------------------------------|------------------------|--------------------------|
|              | P     |              | $h_2$ max          | T max           | $d_2$ max    | $L_r$ max  |   |                                |                        |                          |
| BL422        | 0.500 | 2x2          | 0.48               | 0.082           | 0.200        | 0.44       | 5,045                                   | 6,204                          | 631                    | 0.4                      |
| BL423        | 0.500 | 2x3          | 0.48               | 0.082           | 0.200        | 0.52       | 5,045                                   | 6,204                          | 631                    | 0.5                      |
| BL434        | 0.500 | 3x4          | 0.48               | 0.082           | 0.200        | 0.69       | 7,591                                   | 9,306                          | 949                    | 0.8                      |
| BL444        | 0.500 | 4x4          | 0.48               | 0.082           | 0.200        | 0.77       | 10,114                                  | 12,589                         | 1,264                  | 0.9                      |
| BL446        | 0.500 | 4x6          | 0.48               | 0.082           | 0.200        | 0.94       | 10,114                                  | 12,589                         | 1,264                  | 1.1                      |
| BL466        | 0.500 | 6x6          | 0.48               | 0.082           | 0.200        | 1.10       | 15,159                                  | 18,366                         | 1,895                  | 1.3                      |
| BL488        | 0.500 | 8x8          | 0.48               | 0.082           | 0.200        | 1.44       | 20,227                                  | 24,593                         | 2,528                  | 1.7                      |
| BL522        | 0.625 | 2x2          | 0.59               | 0.096           | 0.235        | 0.51       | 7,591                                   | 9,689                          | 949                    | 0.6                      |
| BL523        | 0.625 | 2x3          | 0.59               | 0.096           | 0.235        | 0.61       | 7,591                                   | 9,689                          | 949                    | 0.7                      |
| BL534        | 0.625 | 3x4          | 0.59               | 0.096           | 0.235        | 0.80       | 11,114                                  | 14,747                         | 1,389                  | 1.0                      |
| BL544        | 0.625 | 4x4          | 0.59               | 0.096           | 0.235        | 0.90       | 15,159                                  | 18,996                         | 1,895                  | 1.2                      |
| BL546        | 0.625 | 4x6          | 0.59               | 0.096           | 0.235        | 1.09       | 15,159                                  | 18,996                         | 1,895                  | 1.5                      |
| BL566        | 0.625 | 6x6          | 0.59               | 0.096           | 0.235        | 1.29       | 22,750                                  | 28,122                         | 2,844                  | 1.8                      |
| BL588        | 0.625 | 8x8          | 0.59               | 0.096           | 0.235        | 1.68       | 30,318                                  | 38,104                         | 3,790                  | 2.4                      |
| BL622        | 0.750 | 2x2          | 0.71               | 0.130           | 0.313        | 0.68       | 11,114                                  | 14,297                         | 1,389                  | 1.0                      |
| BL623        | 0.750 | 2x3          | 0.71               | 0.130           | 0.313        | 0.82       | 11,114                                  | 14,297                         | 1,389                  | 1.2                      |
| BL634        | 0.750 | 3x4          | 0.71               | 0.130           | 0.313        | 1.08       | 17,181                                  | 23,110                         | 2,148                  | 1.7                      |
| BL644        | 0.750 | 4x4          | 0.71               | 0.130           | 0.313        | 1.21       | 22,250                                  | 27,178                         | 2,781                  | 1.9                      |
| BL646        | 0.750 | 4x6          | 0.71               | 0.130           | 0.313        | 1.48       | 22,250                                  | 27,178                         | 2,781                  | 2.4                      |
| BL666        | 0.750 | 6x6          | 0.71               | 0.130           | 0.313        | 1.74       | 33,364                                  | 42,892                         | 4,171                  | 2.9                      |
| BL688        | 0.750 | 8x8          | 0.71               | 0.130           | 0.313        | 2.27       | 44,477                                  | 53,682                         | 5,560                  | 3.9                      |
| BL822        | 1.000 | 2x2          | 0.95               | 0.161           | 0.376        | 0.84       | 19,204                                  | 24,323                         | 2,401                  | 1.5                      |
| BL823        | 1.000 | 2x3          | 0.95               | 0.161           | 0.376        | 1.00       | 19,204                                  | 24,323                         | 2,401                  | 1.8                      |
| BL834        | 1.000 | 3x4          | 0.95               | 0.161           | 0.376        | 1.33       | 29,318                                  | 38,216                         | 3,665                  | 2.6                      |
| BL844        | 1.000 | 4x4          | 0.95               | 0.161           | 0.376        | 1.49       | 38,409                                  | 48,242                         | 6,030                  | 2.9                      |
| BL846        | 1.000 | 4x6          | 0.95               | 0.161           | 0.376        | 1.82       | 38,409                                  | 48,242                         | 6,030                  | 3.6                      |
| BL866        | 1.000 | 6x6          | 0.95               | 0.161           | 0.376        | 2.14       | 57,636                                  | 72,948                         | 9,119                  | 4.4                      |
| BL888        | 1.000 | 8x8          | 0.95               | 0.161           | 0.376        | 2.80       | 76,841                                  | 97,271                         | 9,605                  | 5.8                      |



# Special Applications

## Leaf Chain

(All dimensions listed in inches)



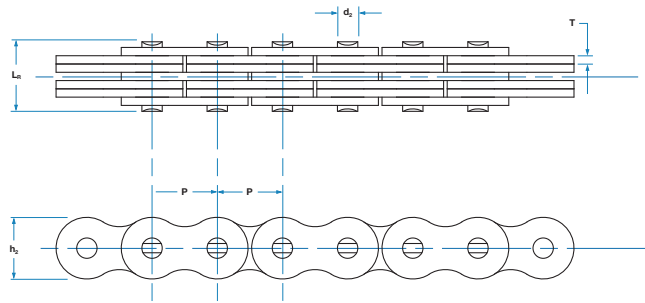
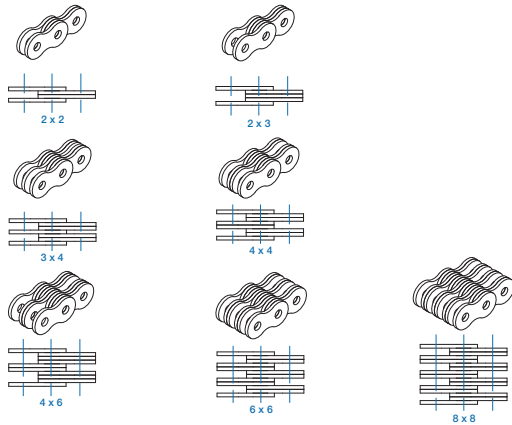
| Chain Number | Pitch | Plate Lacing | Inner Plate Height | Plate Thickness | Pin Diameter | Pin Length | Minimum Ultimate Tensile Strength (lbs) | Average Tensile Strength (lbs) | Max Working Load (lbs) | Weight per Foot (lbs/ft) |
|--------------|-------|--------------|--------------------|-----------------|--------------|------------|---|--------------------------------|------------------------|--------------------------|
|              | P     |              | $h_2$ max          | T max           | $d_2$ max    |            |   |                                |                        |                          |
| BL1022       | 1.250 | 2x2          | 1.19               | 0.193           | 0.437        | 1.00       | 26,272                                  | 33,900                         | 2,627                  | 2.3                      |
| BL1023       | 1.250 | 2x3          | 1.19               | 0.193           | 0.437        | 1.19       | 26,272                                  | 33,900                         | 2,627                  | 2.9                      |
| BL1034       | 1.250 | 3x4          | 1.19               | 0.193           | 0.437        | 1.58       | 41,454                                  | 52,064                         | 4,145                  | 4.0                      |
| BL1044       | 1.250 | 4x4          | 1.19               | 0.193           | 0.437        | 1.78       | 52,568                                  | 65,507                         | 5,257                  | 4.6                      |
| BL1046       | 1.250 | 4x6          | 1.19               | 0.193           | 0.437        | 2.17       | 52,568                                  | 65,507                         | 5,257                  | 5.8                      |
| BL1066       | 1.250 | 6x6          | 1.19               | 0.193           | 0.437        | 2.56       | 78,863                                  | 96,731                         | 7,886                  | 6.9                      |
| BL1088       | 1.250 | 8x8          | 1.19               | 0.193           | 0.437        | 3.34       | 105,136                                 | 124,786                        | 10,514                 | 9.3                      |
| BL1222       | 1.500 | 2x2          | 1.43               | 0.227           | 0.500        | 1.17       | 34,363                                  | 43,162                         | 3,437                  | 3.1                      |
| BL1223       | 1.500 | 2x3          | 1.43               | 0.227           | 0.500        | 1.40       | 34,363                                  | 43,162                         | 3,437                  | 3.9                      |
| BL1234       | 1.500 | 3x4          | 1.43               | 0.227           | 0.500        | 1.85       | 55,591                                  | 71,014                         | 5,559                  | 5.4                      |
| BL1244       | 1.500 | 4x4          | 1.43               | 0.227           | 0.500        | 2.08       | 68,750                                  | 85,671                         | 6,875                  | 6.2                      |
| BL1246       | 1.500 | 4x6          | 1.43               | 0.227           | 0.500        | 2.54       | 68,750                                  | 85,671                         | 6,875                  | 7.8                      |
| BL1266       | 1.500 | 6x6          | 1.43               | 0.227           | 0.500        | 3.00       | 103,113                                 | 122,201                        | 10,311                 | 9.3                      |
| BL1288       | 1.500 | 8x8          | 1.43               | 0.227           | 0.500        | 3.91       | 137,500                                 | 163,205                        | 13,750                 | 12.5                     |
| BL1422       | 1.750 | 2x2          | 1.66               | 0.258           | 0.563        | 1.32       | 43,477                                  | 50,737                         | 4,348                  | 4.1                      |
| BL1423       | 1.750 | 2x3          | 1.66               | 0.258           | 0.563        | 1.58       | 43,477                                  | 50,737                         | 4,348                  | 5.1                      |
| BL1434       | 1.750 | 3x4          | 1.66               | 0.258           | 0.563        | 2.10       | 71,772                                  | 83,760                         | 7,177                  | 7.1                      |
| BL1444       | 1.750 | 4x4          | 1.66               | 0.258           | 0.563        | 2.36       | 86,954                                  | 101,430                        | 8,695                  | 8.2                      |
| BL1446       | 1.750 | 4x6          | 1.66               | 0.258           | 0.563        | 2.88       | 86,954                                  | 101,430                        | 8,695                  | 10.2                     |
| BL1466       | 1.750 | 6x6          | 1.66               | 0.258           | 0.563        | 3.40       | 131,431                                 | 153,404                        | 13,143                 | 12.2                     |
| BL1488       | 1.750 | 8x8          | 1.66               | 0.258           | 0.563        | 4.44       | 173,886                                 | 202,949                        | 17,389                 | 16.3                     |
| BL1622       | 2.000 | 2x2          | 1.90               | 0.296           | 0.687        | 1.54       | 65,704                                  | 76,679                         | 6,570                  | 5.4                      |
| BL1623       | 2.000 | 2x3          | 1.90               | 0.296           | 0.687        | 1.83       | 65,704                                  | 76,679                         | 6,570                  | 6.7                      |
| BL1634       | 2.000 | 3x4          | 1.90               | 0.296           | 0.687        | 2.43       | 100,091                                 | 116,806                        | 10,009                 | 9.4                      |
| BL1644       | 2.000 | 4x4          | 1.90               | 0.296           | 0.687        | 2.73       | 131,431                                 | 152,954                        | 13,143                 | 10.8                     |
| BL1646       | 2.000 | 4x6          | 1.90               | 0.296           | 0.687        | 3.32       | 131,431                                 | 152,954                        | 13,143                 | 13.4                     |
| BL1666       | 2.000 | 6x6          | 1.90               | 0.296           | 0.687        | 3.92       | 194,863                                 | 224,957                        | 19,486                 | 16.1                     |
| BL1688       | 2.000 | 8x8          | 1.90               | 0.296           | 0.687        | 5.11       | 262,841                                 | 306,774                        | 26,284                 | 21.5                     |



# Special Applications

## Leaf Chain

(All dimensions listed in inches)



| Chain Number | Pitch | Plate Lacing | Inner Plate Height | Plate Thickness | Pin Diameter | Pin Length | Minimum Ultimate Tensile Strength (lbs) | Average Tensile Strength (lbs) | Max Working Load (lbs) | Weight per Foot (lbs/ft) |
|--------------|-------|--------------|--------------------|-----------------|--------------|------------|---|--------------------------------|------------------------|--------------------------|
|              | P     |              | $h_2$ max          | T max           | $d_2$ max    | $L_p$ max  |   |                                |                        |                          |
| BL2022       | 2.500 | 2x2          | 2.38               | 0.390           | 0.937        | 2.04       | 98,568                                  | 115,030                        | 9,857                  | 10.6                     |
| BL2023       | 2.500 | 2x3          | 2.38               | 0.390           | 0.937        | 2.43       | 98,568                                  | 115,030                        | 9,857                  | 13.3                     |
| BL2034       | 2.500 | 3x4          | 2.38               | 0.390           | 0.937        | 3.21       | 147,590                                 | 172,242                        | 14,759                 | 18.6                     |
| BL2044       | 2.500 | 4x4          | 2.38               | 0.390           | 0.937        | 3.61       | 197,163                                 | 230,083                        | 19,716                 | 21.2                     |
| BL2046       | 2.500 | 4x6          | 2.38               | 0.390           | 0.937        | 4.39       | 197,163                                 | 230,083                        | 19,716                 | 26.5                     |
| BL2066       | 2.500 | 6x6          | 2.38               | 0.390           | 0.937        | 5.17       | 295,704                                 | 345,127                        | 29,570                 | 31.9                     |
| BL2088       | 2.500 | 8x8          | 2.38               | 0.390           | 0.937        | 6.74       | 394,272                                 | 460,072                        | 39,427                 | 42.5                     |